



2B Gemstone Boulevard Carine WA

Located in the new Two Gemstone building on the corner of Almadine Road and Gemstone Boulevard is this 73 square metre office that is zoned medical / consulting or could be used as office space.

Two Gemstone is a two level modern commercial building that is a blend of medical, retail and office spaces. Join fantastic tenants such as St John of God Medical, Infusion Physio and Pilates and Ping Ming Health.

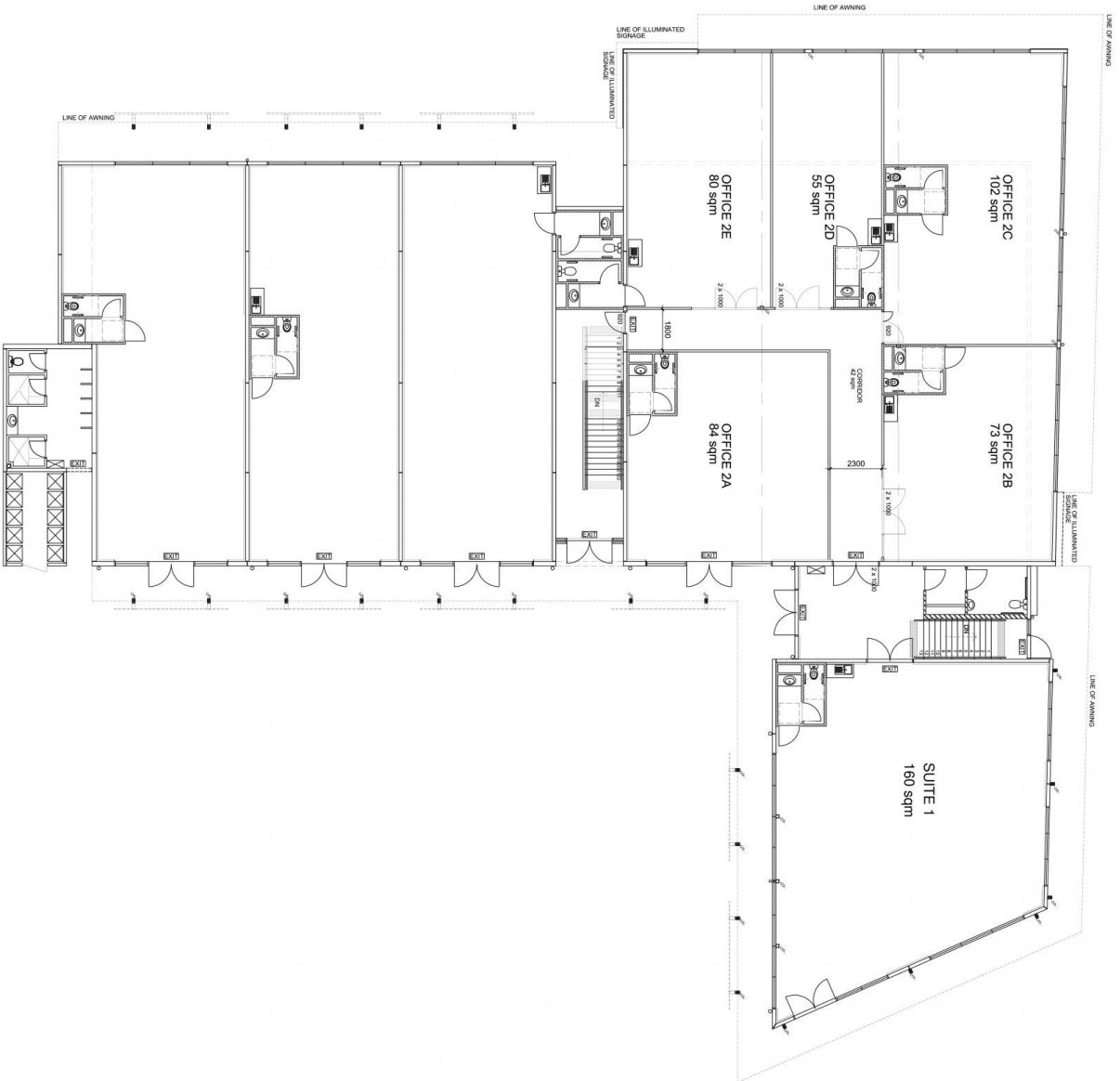
Available For Lease: Zoned Medical / Office / Consulting
 2B - 73 Square Metres - \$325 sqm + GST = \$23,725 + GST
 Outgoings = \$8,500

For more information please contact exclusive agent:
 Scott Durell

Building Size : 73 sqm
View : <https://www.realtysource.com.au/lease/wa/northern-suburbs/carine/commercial/healthcare/5712439>



Scott Durell
 08 9203 7732



ONE CONSTRUCTION (WA) PTY LTD
 A/CN 50/55 CAMERON ST WA 6013
 P: 08 9307 2144
 E: info@oneconstruction.com.au
 W: www.oneconstruction.com.au



CLIENT:
 The Augustus Group Trust
ADDRESS:
 Lot 2 (2) Gemstone Boulevard,
 CARINE.

PROPOSED UNIT 2 OFFICES PLAN

REV	DATE	COMMENTS
01	07-06-16	BUILDING - FOR APPROVAL
02	07-06-16	BUILDING - FOR APPROVAL
03	07-06-16	BUILDING - FOR APPROVAL

Drawn By: K.P.
Date: 07-06-16
Scale: 1:100 @ A1
Page: 4-01
CONTRIBUTOR: