



### 191 Carr Place Leederville WA

Located at 191 Carr Place is this unique opportunity to lease this whole building of 380 square metres plus onsite secure parking for up to 10 cars.

The building is located just up the road from vibrant Oxford Street and is an easy walk from the Leederville train station and the shops and cafe strip of Leederville.

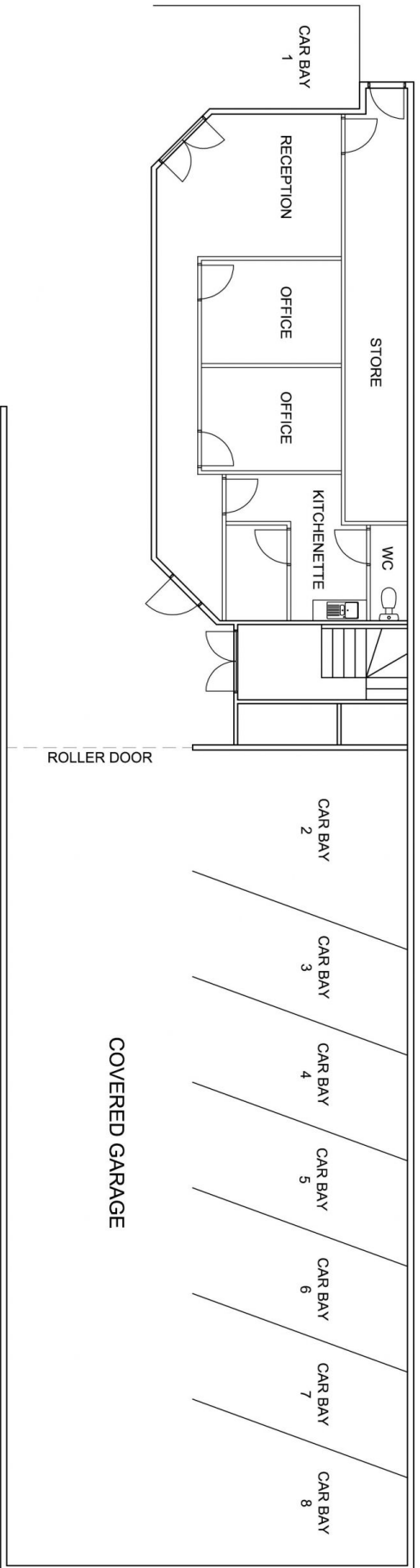
The building is comprised of two separate floors. The ground floor is 80 square metres and has a front reception area, two offices, kitchen area, w.c and store room. The ground floor has the opportunity to integrate into the upstairs office area or potential to sub-lease if required.

The first floor office area has 300 square metres of floor space comprising of 10 offices, an open plan work station area, a board room, a meeting room, a communications

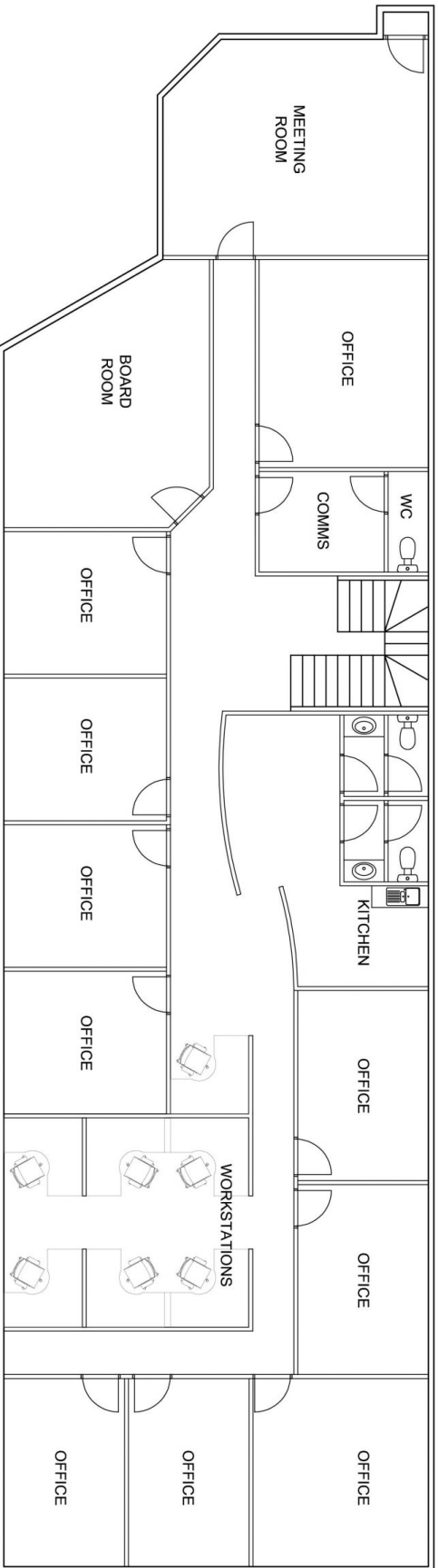
**Building Size** : 380 sqm  
**View** : <https://www.realtysource.com.au/lease/wa/northern-suburbs/leederville/commercial/offices/5712436>



**Scott Durell**  
**08 9203 7732**

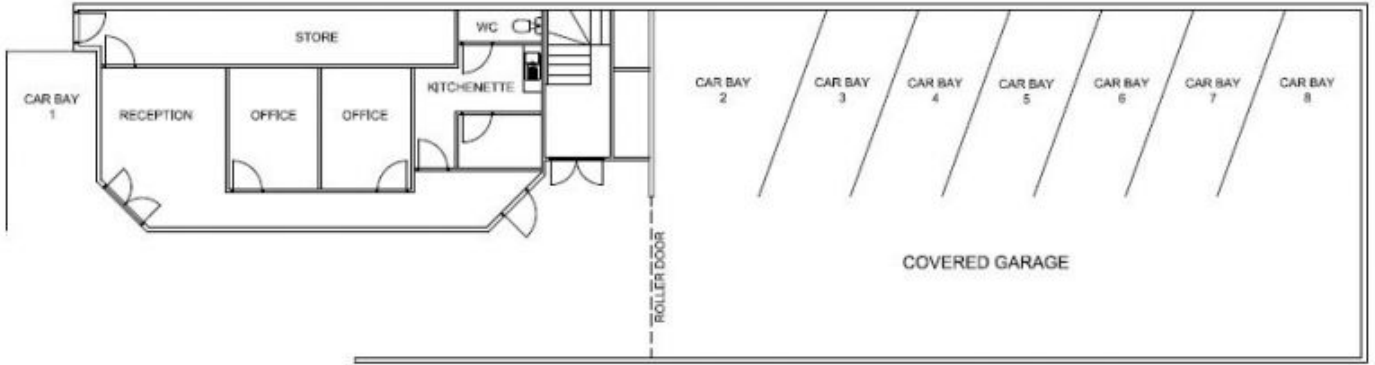


NORTH  
GROUND FLOOR PLAN



NORTH  
FIRST FLOOR PLAN

**NOTES:**  
FOR INFORMATION ONLY.  
LAYOUT & SIZES TO BE VERIFIED.  
DO NOT SCALE OFF PLANS.



GROUND FLOOR PLAN

