






## 1 Geordie Rise Sorrento WA

5  2  4 

LOCATION - BEACH, SCHOOLS, CAFE'S AND PARKS  
 SPACE - LARGE LIVING AREAS AND PLENTY OF BEDROOMS  
 SIZE - ALL SITUATED ON A BIG BLOCK WITH LARGE BACK YARD, FRONT YARD, POOL AND HUGE OUTDOOR ENTERTAINING AREA

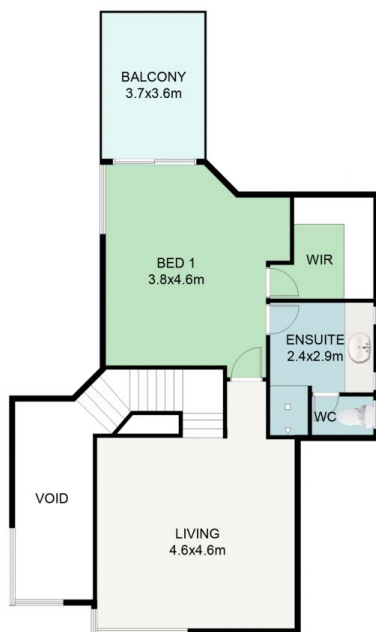
Positioned at the foot of a quiet cul-de-sac on a large 813 sqm block is this big federation styled family home that ticks all the boxes. The location is ideal being walking distance to Sorrento Beach and cafes, Hillarys Marina, primary and secondary schools and many parks. There are five bedrooms, two bathrooms and multiple living areas.

At the heart of the home is a good sized kitchen with plenty of bench and cupboard space, a dishwasher, gas hobs and built in pantry. The kitchen flows onto an open plan meals /

**Land Size** : 813 sqm  
**View** : <https://www.realtysource.com.au/sale/wa/northern-suburbs/sorrento/residential/house/5712406>



**Scott Durell**  
 08 9203 7732



FIRST FLOOR



GROUND FLOOR

This floor plan including furniture, fixture measurements and dimensions are approximate and for illustrative purposes only.  
 Boxbrownie.com gives no guarantee, warranty or representation as to the accuracy and layout. All enquiries must be directed to the agent, vendor or party representing this floor plan.

1 GEORDIE RISE, SORRENTO