

20 Village Mews Wannanup WA

4  3  2 

Based on "the Paganini" and built in 2005 by Statesman Homes this home is packed with options for you to enjoy living in this vibrant community. This delightful home is low maintenance. With easy access from Village mews or Westview parade.

The home has a Porch entry with front door access from Westview Parade and opens into a complete family activities area. Plus there is good sized a study, a lounge that gives a great option for as a second tv room plus a family and meals area.

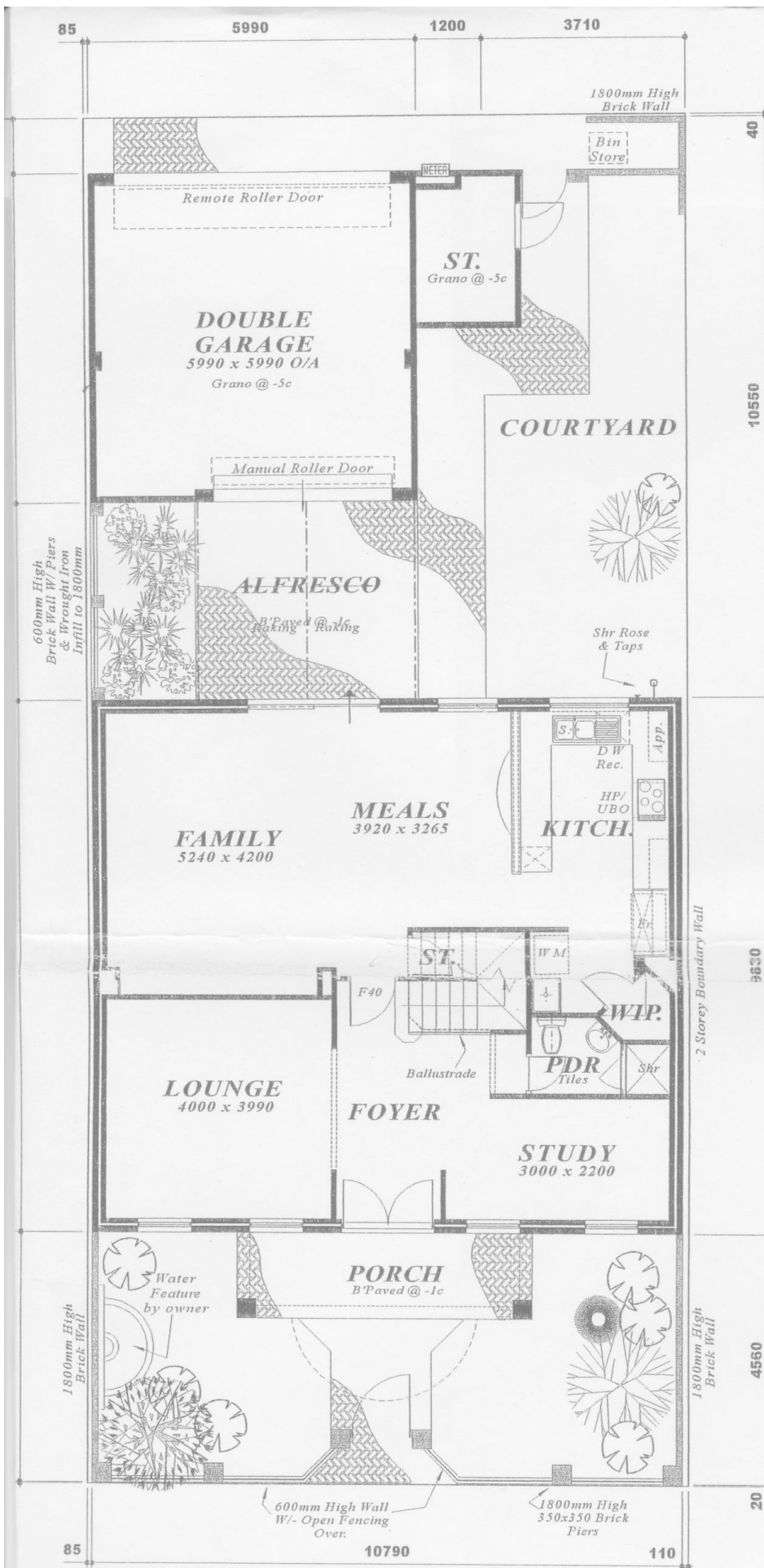
The kitchen has great bench, walk in pantry and cupboard space and overlooks the dining / family area.

On the ground floor there is also a powder room with shower and laundry.

Price : ALL OFFERS PRESENTED
Building Size : 288 sqm
Land Size : 275 sqm
View : <https://www.realtysource.com.au/sale/wa/mandurah-surrounds/wannanup/residential/house/5712384>



Scott Durell
 08 9203 7732



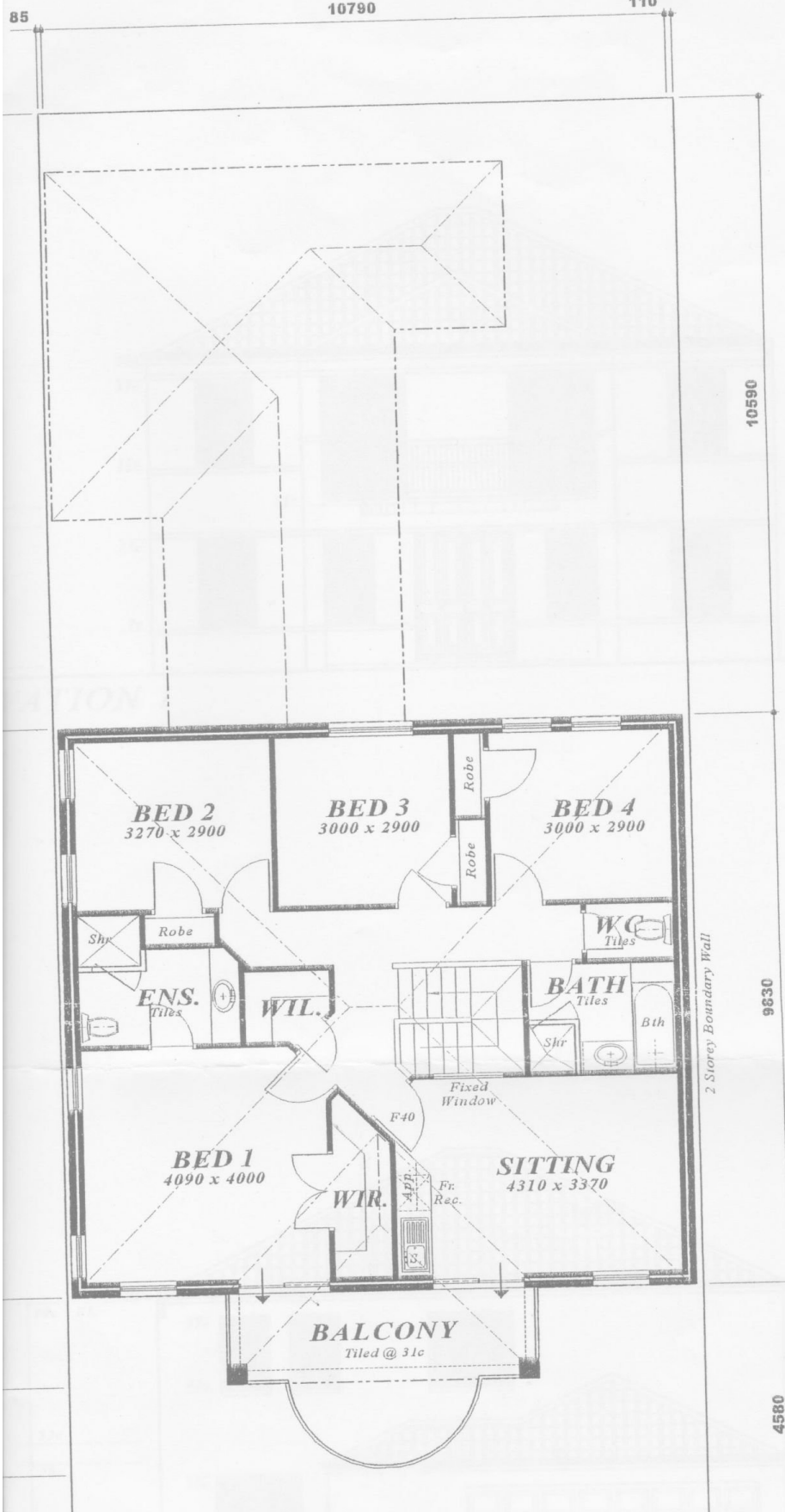
ALFRESCO	: 14.65
PORCH	: 8.41
BALCONY	: 12.26
TOTAL	: 288.81
GROUND PERIM.	: 41.24
UPPER PERIM.	: 41.24



162 08

N.

CITY OF MANDURAH
TOWN PLANNING
APPROVED
25 FEB 2003
SUBJECT TO CONDITIONS AS SHOWN ON APPENDIX
NOTICE OF APPROVAL DATED. 08/2/03
11



AREAS

GROUND FLOOR:	106.06
UPPER FLOOR:	106.06
D-GARAGE / ST.:	41.37
ALFRESCO:	14.65
PORCH:	8.41
BALCONY:	12.26

TOTAL : 288.81

GROUND PERIM.: 41.24
UPPER PERIM.: 41.24



CITY OF MAN
TOWN PLAN
APPROVAL
25 FEB 2
SUBJECT TO CONDITIONS AS SHOWN
NOTICE OF APPROVAL DATED 25 FEB 2011